

**Anti-Swine IgG (H&L) (Alkaline Phosphatase Conjugated) Secondary Antibody**  
**Goat Polyclonal, Alkaline Phosphatase (Calf Intestine)**  
**Catalog # ASR2234****Specification****Anti-Swine IgG (H&L) (Alkaline Phosphatase Conjugated) Secondary Antibody - Product Information**

Description	<b>Anti-SWINE IgG (H&amp;L) (GOAT) Antibody</b>
Host	<b>Alkaline Phosphatase Conjugated</b>
Conjugate	<b>Goat</b>
Target Species	<b>Alkaline Phosphatase (Calf Intestine)</b>
Clonality	<b>Swine</b>
Application	<b>Polyclonal</b>
Application Note	<b>WB, E, IC</b>
	<b>ELISA 1:2,000-1:10,000;Western Blot</b>
	<b>1:500-1:2,500;Immunochemistry</b>
	<b>1:200-1:1,000</b>
Physical State	<b>Liquid (sterile filtered)</b>
Host Isotype	<b>IgG</b>
Target Isotype	<b>IgG (H&amp;L)</b>
Buffer	<b>0.05 M Tris Chloride, 0.15M Sodium Chloride, 0.001M Magnesium Chloride, 0.0001M Zinc Chloride, 50% (v/v) Glycerol; pH 8.0</b>
Immunogen	<b>Anti-Swine IgG whole molecule was produced by repeated immunization with Swine IgG whole molecule in goat.</b>
Stabilizer	<b>10 mg/mL Bovine Serum Albumin (BSA) - Immunoglobulin and Protease free</b>
Preservative	<b>0.01% (w/v) Sodium Azide</b>

**Anti-Swine IgG (H&L) (Alkaline Phosphatase Conjugated) Secondary Antibody - Additional Information****Shipping Condition**

Wet Ice

**Purity**

This product was prepared from monospecific antiserum by immunoaffinity chromatography using Swine IgG coupled to agarose beads followed by solid phase adsorption(s) to remove any unwanted reactivities. Assay by immunoelectrophoresis resulted in a single precipitin arc against anti-Alkaline Phosphatase (calf intestine), anti-Goat Serum, Swine IgG and Swine Serum.

**Storage Condition**

Store vial at 4° C before opening. DO NOT FREEZE. This product is stable at 4° C as an undiluted liquid. Dilute only prior to immediate use. Freezing alkaline phosphatase conjugates will result in a substantial loss of enzymatic activity.

**Precautions Note**

This product is for research use only and is not intended for therapeutic or diagnostic applications.

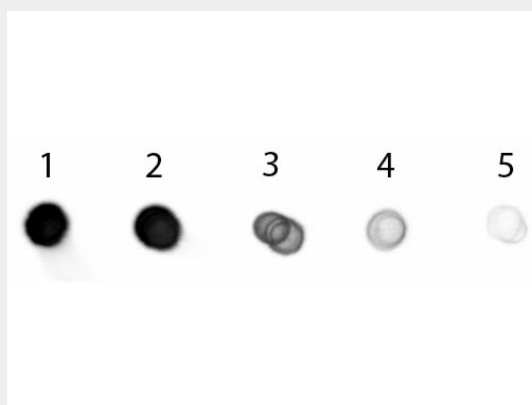
## **Anti-Swine IgG (H&L) (Alkaline Phosphatase Conjugated) Secondary Antibody - Protein Information**

## **Anti-Swine IgG (H&L) (Alkaline Phosphatase Conjugated) Secondary Antibody - Protocols**

Provided below are standard protocols that you may find useful for product applications.

- [Western Blot](#)
- [Blocking Peptides](#)
- [Dot Blot](#)
- [Immunohistochemistry](#)
- [Immunofluorescence](#)
- [Immunoprecipitation](#)
- [Flow Cytometry](#)
- [Cell Culture](#)

## **Anti-Swine IgG (H&L) (Alkaline Phosphatase Conjugated) Secondary Antibody - Images**



Dot Blot of Goat anti-Swine IgG Antibody Alkaline Phosphatase Conjugated. Antigen: Swine IgG. Load: Lane 1 - 200 ng Lane 2 - 66.7 ng Lane 3 - 22.2 ng Lane 4 - 7.41 ng Lane 5 - 2.47 ng. Primary antibody: n/a. Secondary antibody: Goat anti-Swine IgG Antibody Alkaline Phosphatase Conjugated at 1:1,000 for 60 min at RT. Block: MB-070 for 1 HR at RT.

## **Anti-Swine IgG (H&L) (Alkaline Phosphatase Conjugated) Secondary Antibody - Background**

Anti-Swine IgG whole molecule antibody generated in goat detects specifically Swine IgG whole molecule. This secondary antibody anti-Swine is ideal for investigators who routinely perform ELISA, Sandwich ELISA, titration assays, western-blot, immunoprecipitation and more generally immunoassays.